

# SUCCESS STORIES

## LANDLORD REPRESENTATION





BUILDING & LAND TECHNOLOGY

STAMFORD, CT

***Harbor Point - 711 & 845 Canal Street, One & Two Harbor Point Square***

- Dinosaur Bar-B-Que - 9,000 SF
- Design Within Reach - 7,171 SF
- First Niagara Bank/Key Bank - 3,500 SF
- Go Green (x 2) - 1,800 SF/1,222 SF
- Harbor Point Organic Market - 2,791 SF
- HBar Salon - 1,975 SF
- Le Pain Quotidien - 2,900 SF
- Robeks - 800 SF
- Subway - 800 SF
- Pinot's Palette - 1,700 SF
- Patisserie Salzburg - 1,837 SF
- Proof Coffee - 500 SF
- The Stamford Hospital - 2,147 SF + 5,835 SF
- Westech Security - 400 SF





## CLEAR ROCK PROPERTIES

## STAMFORD, CT

*850 Canal Street*

- GolfTec - 2,550SF
- Madabolics - 3,688



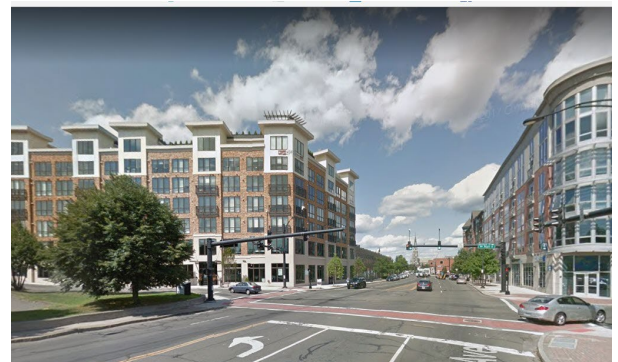


**WAYPOINTE DISTRICT**  
**INVICTUS REAL ESTATE PARTNERS LLC**

**NORWALK, CT**

*500 & 515 West Avenue*

- Allora Coffee & Bites - 600 SF (The Block)
- Cabo Restaurant & Market - 6,145 SF (The Block)
- F45 - 2,729 SF (The Block)
- Haruki Restaurant - 1,732 SF (The Block)
- iPic Theatre - 42,000 SF (The Pinnacle)
- K.M. Daniel LLC - 2,100 SF (The Block)
- Maria's Friends - 1,226 SF (The Block)
- Pinot's Palette - 2,026 SF (The Block)
- Physicians for Women's Health - 3,000 SF (The Berkeley)
- Regal Real Estate - 644 SF (The Block)





## REGENCY CENTERS

## WESTPORT, CT

### *Compo Acres, 374 Post Road East*

- Jersey Mikes - 1,510 SF
- Le Boudoir Blow Dry Bar - 650 SF
- Pokeworks - 1,282 SF
- Robeks - 1,500 SF
- Solidcore - 1,800 SF
- The Winged Money - 2,910 SF (expansion)
- United Bank - 2,050 SF





## KIMCO

## NORTH HAVEN, CT

### *Home Depot Plaza - 111*

- Ava Nails - 2,600 SF
- Banfield Pet Hospital - 2,640 SF
- Crumbl Cookies - 1,900 SF
- Dick's Sporting Goods - 48,265 SF
- Good Feet - 1,900 SF
- Horizon Dental - 1,800 SF
- Inferno Pizza - 2,500 SF
- Supercuts - 1,500 SF
- Tastee Curritos - 2,500 SF
- Urgent Care Center LP - 3,850 SF
- Vitamin Shoppe - 3,665 SF





**M.G. HUNTINGTON LLC**

**NORWALK, CT**

***Center Seven - 607 Main Avenue***

- CitiBank - 4,400 SF
- I Sold It on eBay - 1,400 SF
- Meta Retail - 1,400 SF
- Omni Fitness - 4,300 SF
- Planet Fitness - 1,400 SF
- Quiznos - 2,000 SF
- Starbucks - 2,800 SF
- SBK Nail Salon - 1,400 SF





## EQUITY ONE

## ENFIELD, CT

### *Brookside Plaza - 38 Hazard Avenue*

- Hibachi Grill - 10,000 SF
- Men's Wearhouse - 5,190
- SF Sleepy's - 4,000 SF
- Verizon Wireless - 3,250 SF







## JPM WESTPORT LLC

## WESTPORT, CT

### *180 Post Road East*

- Alegre - 2,536 SF
- AT&T - 1,800 SF
- Montner & Associates - 2,250 SF
- Steven Mancini Salon - 1,935 SF
- Schoonmaker, George, Colin & Bloomberg - 975 SF
- State Street Launderers - 1,100 SF
- The Toy Post - 2,644 SF





## TEC ASSOCIATES II, LLC

NEW CANAAN, CT

### *3-11 Forest Street*

- Boom LLC - 2,400 SF + renewal
- Crescendo Capital - 1,200 SF
- Hashi Sushi & Lounge - 2,350 SF
- MAG Properties - 800 SF
- Marion Ewing Roe - 1,500 SF
- New Canaan Travel - 1,500 SF
- Nicoblu - 950 SF
- Regan Family Investment - 850 SF
- Peachwave - 2,350 SF
- Sleepy's/Mattress Firm - 3,000 SF
- Townsend & Co Interiors - 850
- SFValerie Wilson Travel - 3,000 SF





## RICH

## SOUTH NORWALK, CT

### *SoNo Design District - Washington St & South Main St*

- ASL Consignment - 550 SF
- Apadana Fine Rugs - 8,560 SF
- Cole Antique Consignments - 1,200 SF
- GigMasters - 4,360 SF
- Interior Design Consignors - 1,975 SF
- Red Lulu - 5,000 SF
- Weld Media - 1,975 SF
- Xlerant - 1,685 SF





## SERITAGE GROWTH PROPERTIES

## WEST HARTFORD, CT

### *The Corbin Collection – 1445 New Britain Avenue*

- GoHealth Urgent Care – 2,670 SF
- Pokeworks – 1,360 SF





**714, LLC**

**SHELTON, CT**

*The Marketplace, 405 Bridgeport Ave*

- Arooga's Grille House & Sports Bar - 7,000 SF
- Barra Italian Street Kitchen - 4,458 SF
- Billionails & Spa - 1,648 SF
- Verizon- 2,500 SF



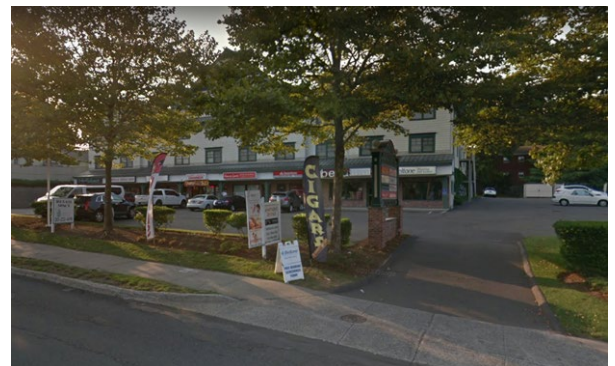


## FYBER PROPERTIES 365, LLC

## NORWALK, CT

### *Sconset Commons, 365 Westport Avenue*

- Bella Professional Beauty Store - 1,250 SF
- Salon Robert - 1,200 SF
- Senior Care - 1,250 SF





## LITCHFIELD CROSSINGS, LLC/ECCO

## NEW MILFORD, CT

*Litchfield Crossings, 169 Danbury Road*

- The TJX Companies - 21,926 SF





**BOYLSTON PROPERTIES CO/PARAGON MANAGEMENT GROUP**

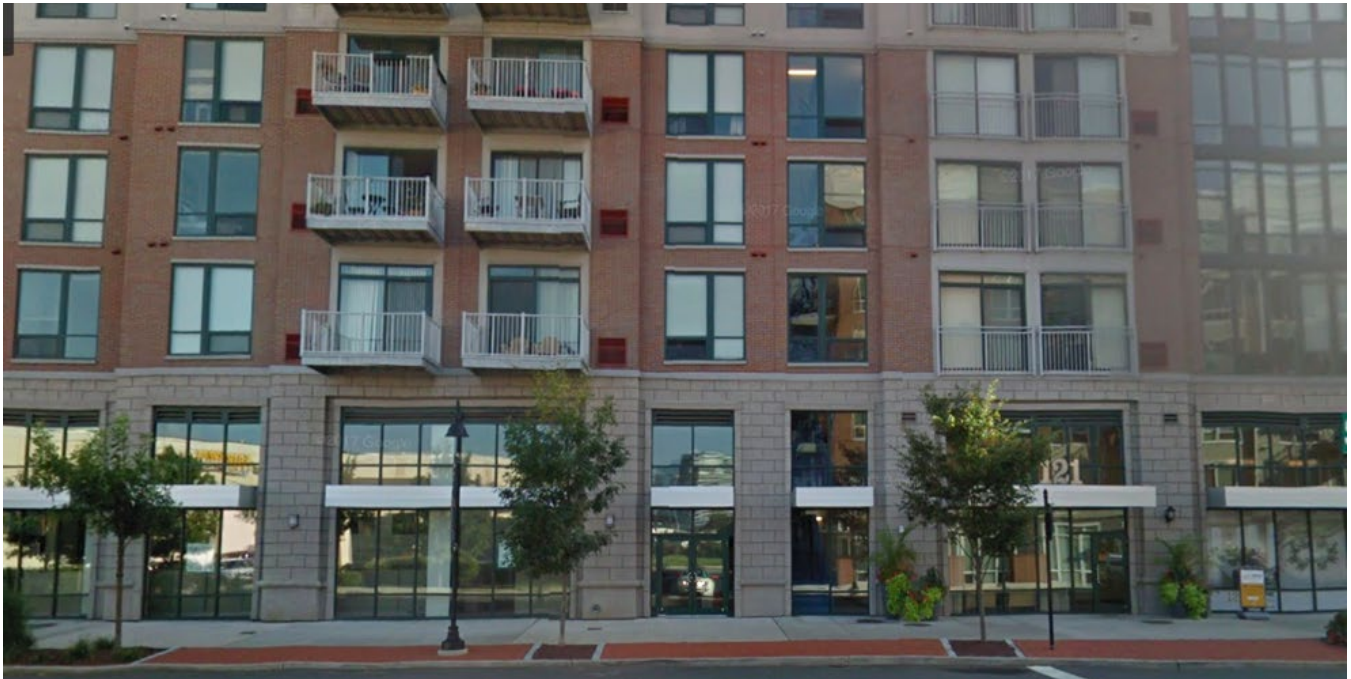
**WILTON, CT**

*101 Old Ridgefield Road*

- Café Ruche - 1,841 SF
- Culture Tea - 1,841 SF
- Direct Eats, Inc. - 1,270 SF





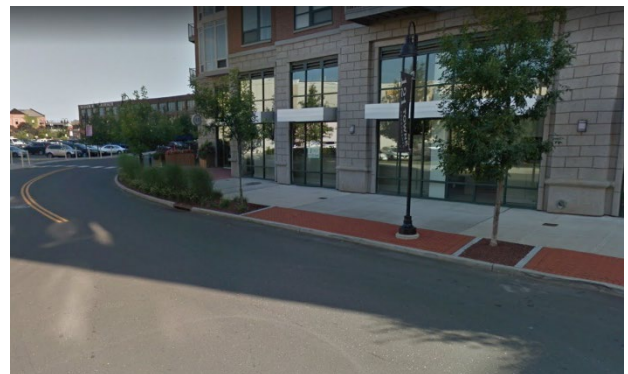


## WAFRA INVESTMENT ADVISORY

## STAMFORD, CT

### *121 Towne Street*

- F45 Fitness - 2,500 SF
- Harbor Point Pizza - 1,509 SF





## GAULT TRUST

## WESTPORT, CT

### 16-30 Post Road East /16-24 Taylor Place

- Able Home Healthcare - 1,600 SF
- Domino Media Group - 1,600 SF
- Fred LLC - 2,382 SF
- Studio on Main - 1,438 SF
- Westport Renewables (GRIDDY) - 1,500 SF





**GAULT ENERGY/FAMILY COMPANIES**

**WESTPORT, CT**

*18 Kings Highway North*

- ACM Realty Services LLC - 13,255 RSF
- Bluepoint Maritime LLC - 1,500 RSF
- Leargas Capital - 2,095 RSF
- Merlin Petroleum Company - 1,400 RSF
- Renewed Mind LLC - 1,325 RSF
- VFG Westport, LLC - 1,500 RSF

*13 Riverside Avenue*

- NEOS Investments - 4550 RSF
- Wells Fargo - 4,550 RSF

*575-580 Riverside Avenue*

- Kneads Bakery - 2,225 SF
- Pretty Brands - 1,000 SF
- MOMU (Ice Cream) - 920 SF



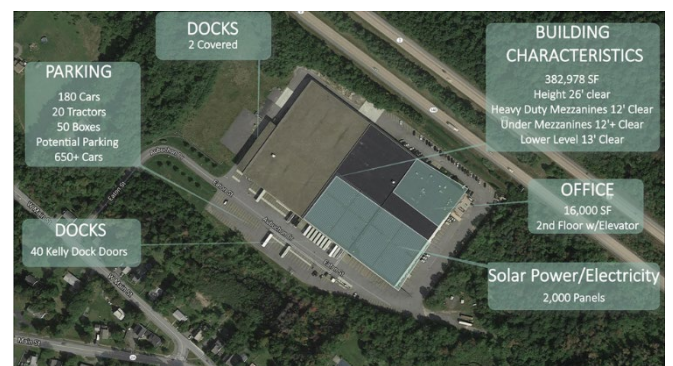


## WESTMINSTER REALTY LLC

## WESTMINSTER, MA

### *95 Aubuchon Drive*

- American Superconductor - 77,480 SF
- Walmart Stores East LP - 181,697 SF





## THE HAMPSHIRE COMPANIES

## BRIDGEPORT, CT

*1000 Lafayette Boulevard*

- Adelman Hirsch and Connors, LLP - 6,332 SF
- Caregiver Homes of Connecticut Inc. - 1,350 SF
- Citizens Bank/RBS - 23,475 SF
- Greater Bridgeport Business Council - 3,296 SF
- Haymond Law Firm - 1,290 SF
- Premier Advisory Group (extension) - 533 SF
- Ryan Ryan Deluca LLP - 12,351 SF
- Samuel Wilson, CPA (extension) - 1,031 SF
- Southwest Connecticut Agency for the Aging - 14,500 SF
- Urban League of Southern Connecticut - 1,732 SF
- White Rose Home Healthcare Agency, LLC - 2,056 SF
- Zeldes Needle and Cooper, P.C. - 15,000 SF





## WATERFORD ONE LLC

## WATERFORD, CT

### *104-106 Boston Post Road*

- AT&T Product Center - 2,000 SF
- Bank of America - 1,916 SF
- Brown & Brown of Connecticut - 1,600 SF
- Goteborg Pizza - 1,882
- Papa John's Pizza - 1,882 SF
- Smoothie King - 1,600 SF





## 800 EAST MAIN LLC (REDEVELOPMENT)

STAMFORD, CT

### *Clark's Hill Shopping Plaza, LLC - 800-816 East Main Street*

- Arrow Alternative Care - 4,913 SF
- Bubbakoo's Burritos - 1,502 SF
- Clear Smile Dental - 2,394 SF
- Dollar Tree - 11,126 SF
- JR Sports Barbershop - 1,000 SF
- SportsMed Physical Therapy - 2,086 SF
- Stamford Community Pharmacy - 1,000 SF





## PG PROPERTIES (REDEVELOPMENT/NEW CONSTRUCTION)

DARIEN, CT

### *Grove Street Plaza - 1292 Boston Post Road*

- Gravinese Jewelers - 850 SF
- JD Cosmetics - 950 SF
- Melting Pot - 4,000 SF

## POST ROAD ELEVEN, LLC

- Charles Michael Gallery - 1,770 SF
- Something White Bridal - 2,065 SF
- Sokayri, LLC - 2,530 SF





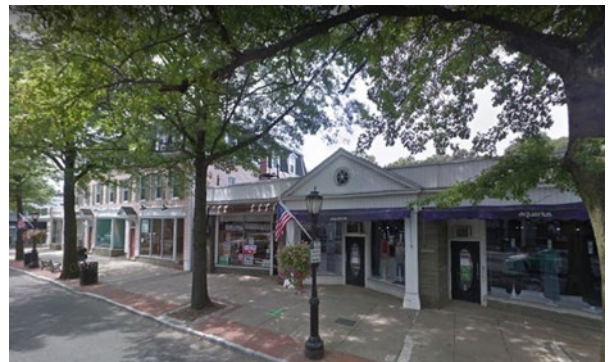


## ELM ASSOCIATES

## DARIEN, CT

### *879-883 Boston Post Road*

- Barvida - 1,600 SF
- Bonny Reflexology - 1,600 SF
- Check Body-Mind - 1,500 SF
- Huntington Learning Center - 1,500 SF
- Jade Nail Salon - 1,500 SF
- Robeks - 1,500 SF
- Subway - 1,600 SF





## NEWMAN'S OWN FOUNDATION

WESTPORT, CT

*1111 Post Road East*

- Connecticut Community Bank - 4,147 SF



## TWENTY LAKE HOLDING

STAMFORD, CT

*300 Main Street*

- Stamford Sushi - 1,105 SF



## RELATED PROPERTIES

SHELTON, CT

### *858-902 Bridgeport Avenue Shelton Square*

- Connecticutare - 4,500 SF
- Palm and Able - 4,500 SF
- Physical Therapy & Sports Medicine Centers - 3,200 SF





## BLACKSHAW HUNCHAR, LLC

## WESTPORT, CT

### *1835 Post Road East*

- Becca Interiors/AYR - 1,550 SF
- Blossom & Stem Floral - 964 SF
- Gloss Salon - 1,136 SF
- Second Foundation - 2,368 SF





**FORSTONE CAPITAL, LLC**

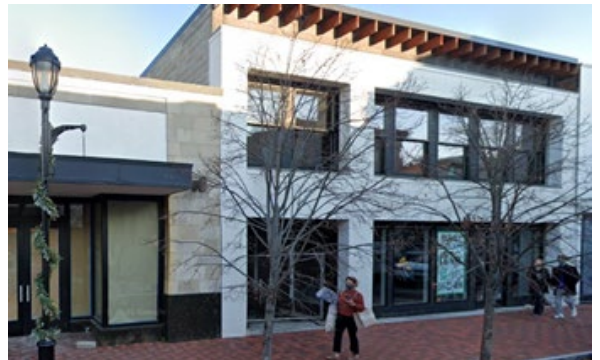
**WESTPORT, CT**

---

***38 Main Street***

---

- Mexicue - 4,423 SF
- Timothy Oulton Retail - 6,058 SF





## LENNAR MULTIFAMILY COMMUNITIES

### *The Mitchell, 131 Mamaroneck Avenue*

**WHITE PLAINS, NY**

- Citibank N.A. - 5,677 SF
- CravWings Tavern - 2,586 SF

### *The Smyth, 885 Washington Boulevard*

**STAMFORD, CT**

- Fidelity Brokerage Services LLC - 7,490 SF





## THUNE ASSOCIATES

## NEW CANAAN, CT

### *21 Locust Avenue*

- AMIP - 134 RSF
- Devonshire Holdings - 494 RSF
- First Candle - 142 RSF
- Innovant - 387 RSF
- Insurance Navigation - 405 RSF
- NY-FL Medical Payments Inc - 271 SF
- Paragon Tutoring - 288 RSF
- Richard Field - 139 RSF
- West Passage Services, LLC - 190 RSF
- ZRG Partners - 134 RSF





## 46 POST ROAD LLC

WESTPORT, CT

### *46 Post Road East*

- Blue & Cream - 2,071 SF
- Diamond BFF - Office Suite
- Emily Blundell - Office Suite
- Isaac Heating & Air Conditioning - 1,475 RSF
- Swag Lab - Office Suite







## 165 MAIN STREET ASSOCIATES LLC

WESTPORT, CT

### *165 Main Street*

- Bridgewater Chocolate LLC - 1,350 SF



## SHARP HILL SQUARE

WILTON, CT

### *198-200 Danbury Road*

- Progressive Diagnostics - 900 SF



## 464 MAIN STREET MONROE LLC

MONROE, CT

### *464 Main Street*

- Monroe Toys, LLC - 5,940 SF
- T-Mobile - 1,400 SF





**UNITED REALTY INC.**

**WESTPORT, CT**

***177 Main Street***

- Cohort Gallery - 600 SF
- Local to Market - 2,500 SF





## SOUTHBROOKE MEDICAL SUITES

NAPLES, FL

### *6750 Immokalee Road*

- All About You MedSpa - 1,639 SF
- Allegiance Health of Southwest Florida LLC - 1,562 SF
- Continuum Surgical Group of Naples - 10,949 SF
- Designed to Smile - 3,666 SF
- HealthQuest Physical Therapy - 2,170 SF
- Neuroscience and Spine Associates - 19,986 SF





**TEC ASSOCIATES**  
*161 Cherry Street*

**NEW CANAAN, CT**

- Cyntex Co - 360 RSF
- Levin Capital Strategies - 1,518 RSF
- Stamford Health Systems - 5,250 SF





**QUAN FAMILY TRUST**  
*1901 Silas Deane Highway*

**ROCKY HILL, CT**

- Liberty Bank - 2,890 SF



**718 REALTY, LLC**  
*718 Dartmouth Street*

**DARTMOUTH, MA**

- Killer B's - 4,964 SF



**ROSTRO, INC.**

**FAIRFIELD, CT**

*136 Fairfield Woods Road*

- Purnima Women's Health LLC - 800 SF
- Streben Marketing, LLC - 800 SF





**137 ETHAN ALLEN HIGHWAY, LLC**

**RIDGEFIELD CT**

***139 Ethan Allen Highway***

- Becca Interiors - 1,600 SF



**PAUL CARPENTER**

**FAIRFIELD CT**

***1640 Post Road***

- Shenyun Huang - 1,640 SF



