



SAUGATUCK  
COMMERCIAL  
REAL ESTATE LLC

LICENSED IN CT, NY, MA, RI, NH, FL

## MEDICAL & PROFESSIONAL OFFICE WESTPORT, CT

NEW OWNERSHIP...BEAUTIFUL UPGRADES

728 POST ROAD EAST



MEDICAL &  
PROFESSIONAL  
OFFICE BUILDING

1,858 RSF  
1ST FLOOR

2,385 RSF  
**LEASED**  
2ND FLOOR



- Two-story medical office building located on Route 1/Post Road East in Westport.
- Excellent visibility and easy access; ADT (average daily traffic) over 22,000.
- Close to downtown Westport's Main Street retail shops, restaurants and other amenities.
- Minutes to I-95, exit 18.
- Covered and surface parking for staff and visitors.

Demographics	1 Mile	3 Mile	5 Mile
Population	5,751	35,884	115,125
Average HHl	\$392,621	\$356,149	\$256,596
Adj. Daytime Demographics	7,946	44,592	139,366

EXCLUSIVE LEASING AGENTS

Penny Wickey 203.222.4194  
pwickey@saugatuckcommercial.com

Laure Aubuchon 203.349.8485  
laubuchon@saugatuckcommercial.com

The foregoing information was furnished to us by sources which we deem reliable, but no warranty or representation is made as to the accuracy thereof. Subject to correction of errors, omissions, change of price, prior sale or withdrawal from market without notice.





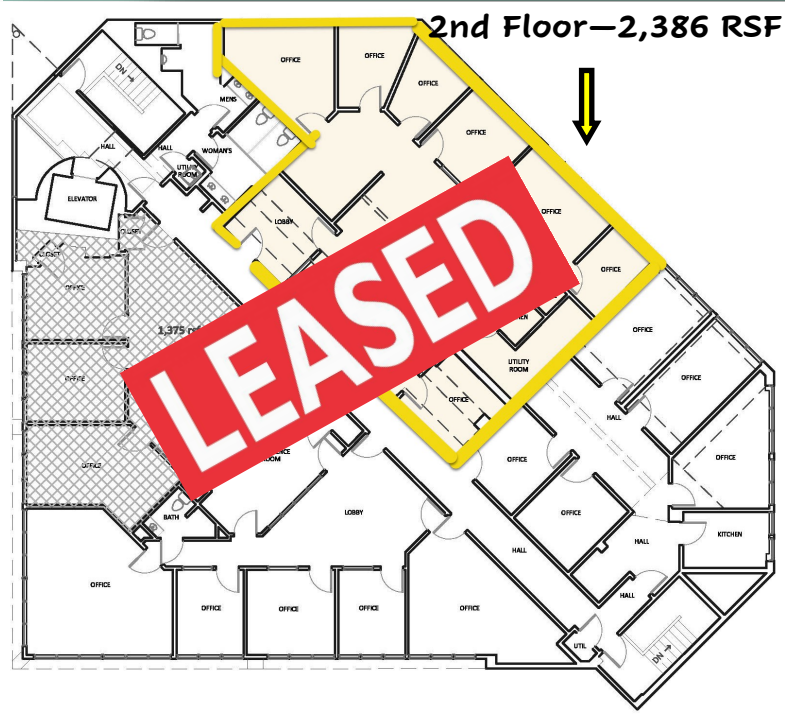
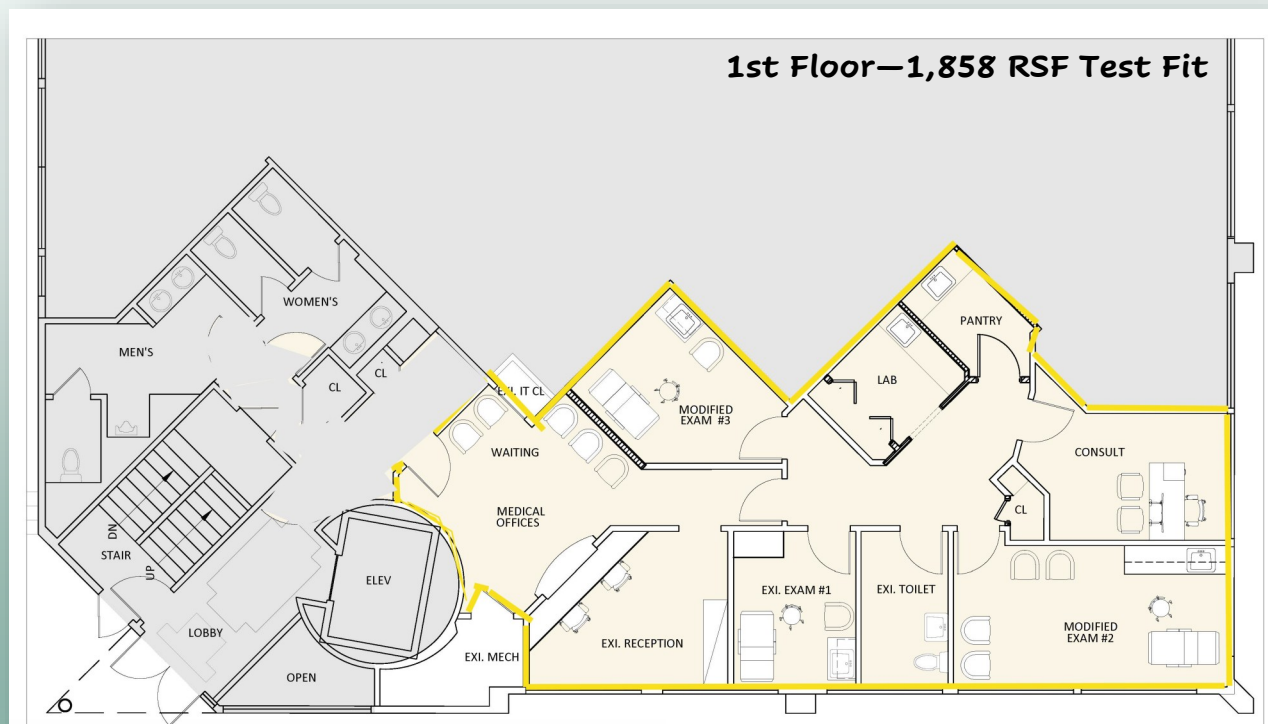
SAUGATUCK  
COMMERCIAL  
REAL ESTATE LLC

LICENSED IN CT, NY, MA, RI, NH, FL

## MEDICAL & PROFESSIONAL OFFICE WESTPORT, CT

NEW OWNERSHIP...BEAUTIFUL UPGRADES

728 POST ROAD EAST



EXCLUSIVE LEASING AGENTS  
Penny Wickey 203.222.4194  
[pwickey@saugatuckcommercial.com](mailto:pwickey@saugatuckcommercial.com)

Laure Aubuchon 203.349.8485  
[laubuchon@saugatuckcommercial.com](mailto:laubuchon@saugatuckcommercial.com)

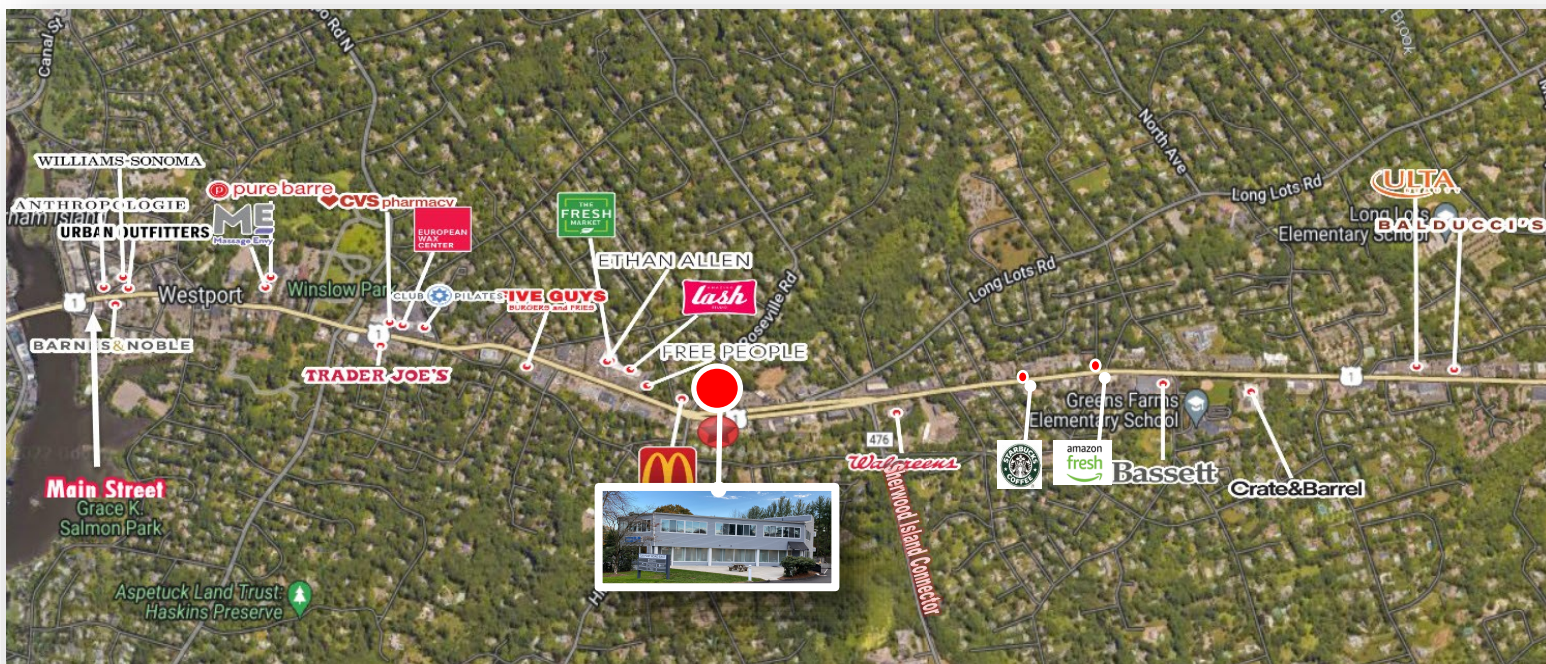
*The foregoing information was furnished to us by sources which we deem reliable, but no warranty or representation is made as to the accuracy thereof. Subject to correction of errors, omissions, change of price, prior sale or withdrawal from market without notice.*



## MEDICAL & PROFESSIONAL OFFICE WESTPORT, CT

NEW OWNERSHIP...BEAUTIFUL UPGRADES

728 POST ROAD EAST



EXCLUSIVE LEASING AGENTS

Penny Wickey 203.222.4194  
pwickey@saugatuckcommercial.com

Laure Aubuchon 203.349.8485  
laubuchon@saugatuckcommercial.com

*The foregoing information was furnished to us by sources which we deem reliable, but no warranty or representation is made as to the accuracy thereof. Subject to correction of errors, omissions, change of price, prior sale or withdrawal from market without notice.*