



SAUGATUCK
COMMERCIAL
REAL ESTATE LLC
LICENSED IN CT, NY, MA, RI, NH, FL

OFFICE SPACE
WESTPORT, CT

Two OFFICES AVAILABLE

46-48 POST ROAD EAST



2ND FLOOR
TWO OFFICES

DOWNTOWN
WESTPORT
ACROSS FROM
MAIN STREET



- Two separate offices; large two-room suite, beautiful fit out, vaulted ceilings, plenty of natural light (available 2/1/26) and smaller, single office.
- Centrally located in downtown Westport across from Main Street shops, restaurants and amenities.
- Above Blue & Cream; directly across from Bedford Square and Anthropologie.
- Walk to the Saugatuck River, adjacent to Westport Library and Levitt Pavilion.
- Convenient parking on the street and in secure municipal lot.

Demographics	1 Mile	3 Mile	5 Mile
Population	6,198	47,745	131,921
Average HHI	\$384,575	\$294,853	\$230,583

Exclusive Broker:
Penny Wickey 203.222.4194
pwickey@saugatuckcommercial.com

The foregoing information was furnished to us by sources which we deem reliable, but no warranty or representative is made as to the accuracy thereof. Subject to correction of errors, omissions, change of price, prior sale or withdrawal from market without notice.

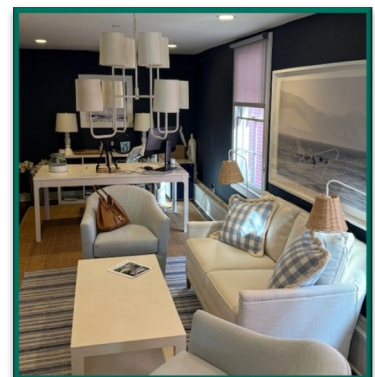


**SAUGATUCK
COMMERCIAL**
REAL ESTATE LLC
LICENSED IN CT, NY, MA, RI, NH, FL

**OFFICE SPACE
WESTPORT, CT**

Two OFFICES AVAILABLE

46-48 POST ROAD EAST



Exclusive Broker:
Penny Wickey 203.222.4194
pwickey@saugatuckcommercial.com