



**SAUGATUCK
COMMERCIAL**
REAL ESTATE LLC
LICENSED IN CT, NY, MA, RI, NH, FL

DOWNTOWN WESTPORT, CT

MAIN STREET & ROUTE 1

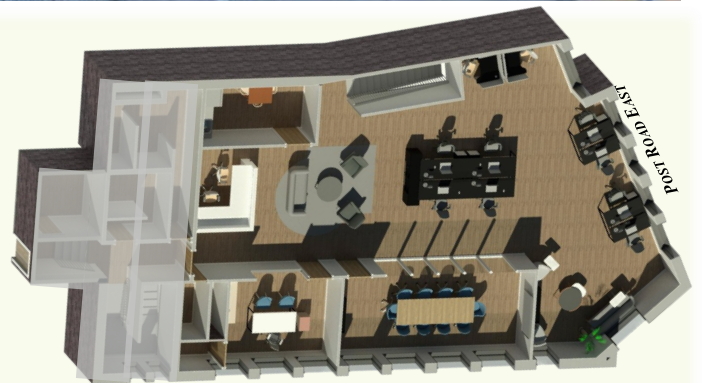
30 POST ROAD EAST



CORNER OFFICE
3,095 RSF

NEWLY RENOVATED!

“MAIN & MAIN”
DOWNTOWN
WESTPORT



- Signalized corner location, across from Tiffany's and Starbucks.
- Floor-ceiling windows overlooking Main Street and Saugatuck River, plenty of natural light, large open space.
- Multiple municipal parking lots available within walking distance.
- Join Main Street retailers; Lululemon, Anthropologie, Rhone, Gorjana, Brooks Brothers, and Vineyard Vines.
- Enjoy convenient downtown dining at Casa Me, Don Memo, Capuli Restaurant, Nômade Westport, and Rye Ridge Deli.

Demographics	1 Mile	3 Mile	5 Mile
Population	5,973	47,384	129,055
Average HHI	\$383,252	\$294,383	\$232,071

Exclusive Broker:

Penny Wickey 203.222.4194
pwickey@saugatuckcommercial.com

The foregoing information was furnished to us by sources which we deem reliable, but no warranty or representative is made as to the accuracy thereof. Subject to correction of errors, omissions, change of price, prior sale or withdrawal from market without notice.



SAUGATUCK
COMMERCIAL
REAL ESTATE LLC
LICENSED IN CT, NY, MA, RI, NH, FL

DOWNTOWN WESTPORT, CT
MAIN STREET & ROUTE 1

30 POST ROAD EAST



RENDERING

Exclusive Broker:

Penny Wickey 203.222.4194
pwickey@saugatuckcommercial.com



**SAUGATUCK
COMMERCIAL**
REAL ESTATE LLC
LICENSED IN CT, NY, MA, RI, NH, FL

DOWNTOWN WESTPORT, CT

MAIN STREET & ROUTE 1

30 Post Road East



SAUGATUCK COMMERCIAL REAL ESTATE LLC

9 BURR ROAD

WESTPORT, CT 06880

SAUGATUCKCOMMERCIAL.COM

Exclusive Broker:

Penny Wickey 203.222.4194
pwickey@saugatuckcommercial.com